

**Panasonic**  
ideas for life

Vandal Proof  
Super Dynamic II Colour Cameras  
(with Low-Light B/W Mode)

**WV-CW470A Series**



The Easy to Install

Vandal Proof

Weather Proof

Camera Solution



**SDII**  
Super Dynamic

# Heavy Duty Construction



**Actual  
Size**

(WV-CW474AF)

## Die-cast aluminum body Shock Resistant

With a body made of die-cast aluminum and a dome made of 3.5mm thick polycarbonate, these cameras are tough enough to resist severe shocks.

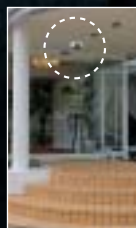


The camera lens unit has a spring structure, so the chassis can withstand external shocks.



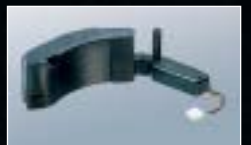
## IP66 approved Rain and Wind Resistant

Meet IP66 international standards. With excellent dust and moisture resistant capabilities, these cameras can be used indoor applications and outdoors, under building eaves.



## Heater Unit: WV-CW3H (Optional) Ideal for Varying Temperatures

The optional heater unit adjusts automatically to temperature fluctuations, helping to prevent dew condensation.



# High Performance in a Rugged Body.

Panasonic's new Vandal Proof Super Dynamic II Colour Cameras. The WV-CW470A Series are not only rugged and loaded with high-performance features, they are also easy to install. Highly resistant to dust, moisture and shock these units satisfy international standards. The WV-CW470A Series include high image quality, increased sensitivity, day/night switching for 24-hour surveillance and a multi-function motion detector. Free from conventional limitations on placement, application and objective, these multipurpose colour cameras are ideal for numerous surveillance applications.

# With All the Features You Need for a Wide Variety of Surveillance Applications.

## Feature Loaded & Simple to Install

**For single-camera 24-hour surveillance Day/Night Switching**

Day

Night

**Versatile attachment with Unlimited Positioning 3-Dimensional Hinges**

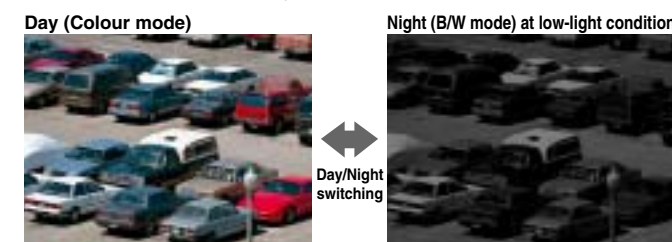
**Senses motion and sends alarm signal Motion Detector**

**80 times dynamic range Super Dynamic II**

## Feature Loaded

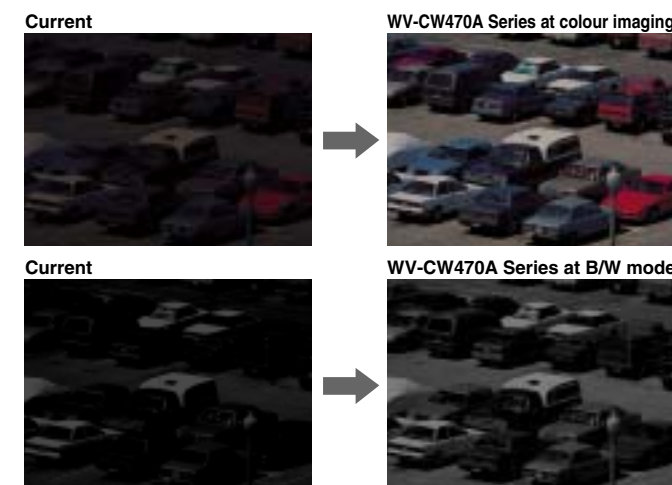
### Single-camera 24-hour surveillance Day/Night Switching

To allow 24-hour surveillance, these cameras (in high-sensitivity mode) sense darkness and switch automatically from daytime colour to nighttime black-and-white with duration and timer setting to meet exact installation requirements. They can also be switched from colour to black-and-white manually.



### Full-colour images at 0.8lux Black-and-white images at 0.1lux

These cameras support full-colour surveillance in low-light situations like this parking lot, switching to black-and-white allows surveillance in light as low as 0.1lux. IR response down to 0.00lux is valid. 10x auto electronic sensitivity up is also supported (in fixed mode 32x available).

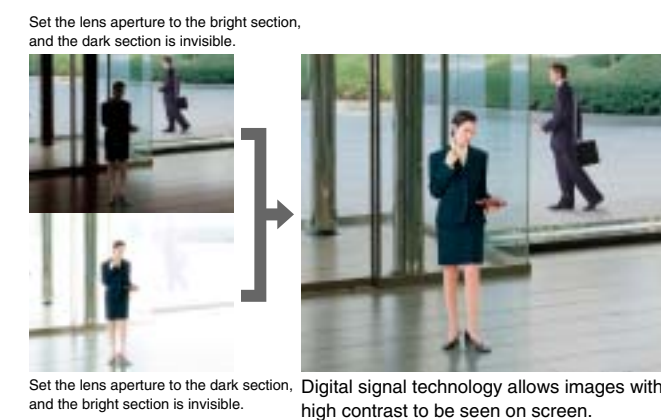


### 2x variable-focal lens is standard equipment

Equipped with a 2x variable-focal lens plus an additional 2x electronic zoom, these cameras can view their subjects in greater details.

### With Super Dynamic II, backlighting is no problem

With a 80 times dynamic range, Panasonic's proprietary Super Dynamic II processing yields clear images even in high-contrast or backlit lighting situations.



### Digital Motion Detector senses movement and sends an alarm signal

When the Motion Detector senses movement in the monitored image, it automatically sends an alarm signal to the system. When linked to a recording device, it provides an efficient way to avoid missed images.



### Character displays title

The monitor can display title up to 16 roman letters or numbers. By allowing instant identification of pre-set camera locations, this feature can help prevent errors during emergency situations.

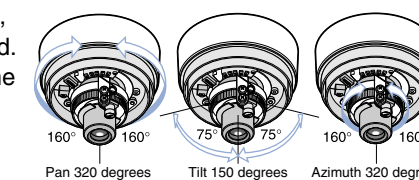


Photographs were taken for the purpose of explanation; actual images may differ.

## Simple to Install

### Proprietary 3-D hinge makes adjustments easy

The 3-dimensional hinge (Pan, Tilt and Azimuth) allows the camera to be rotated as well as moved horizontally and vertically. Digital signal processing allows the image itself to be shifted up, down, left, right, or inverted. Choose precisely the camera angle you need; no camera makes it easier.



### Basic settings couldn't be simpler

Simple dipswitches control Soft/Sharp, Day/Night: Off/Auto and other basic settings. A compact monitor-out terminal with a small liquid crystal display allows you to check settings on the spot.



### Easily installs in existing electronic junction box

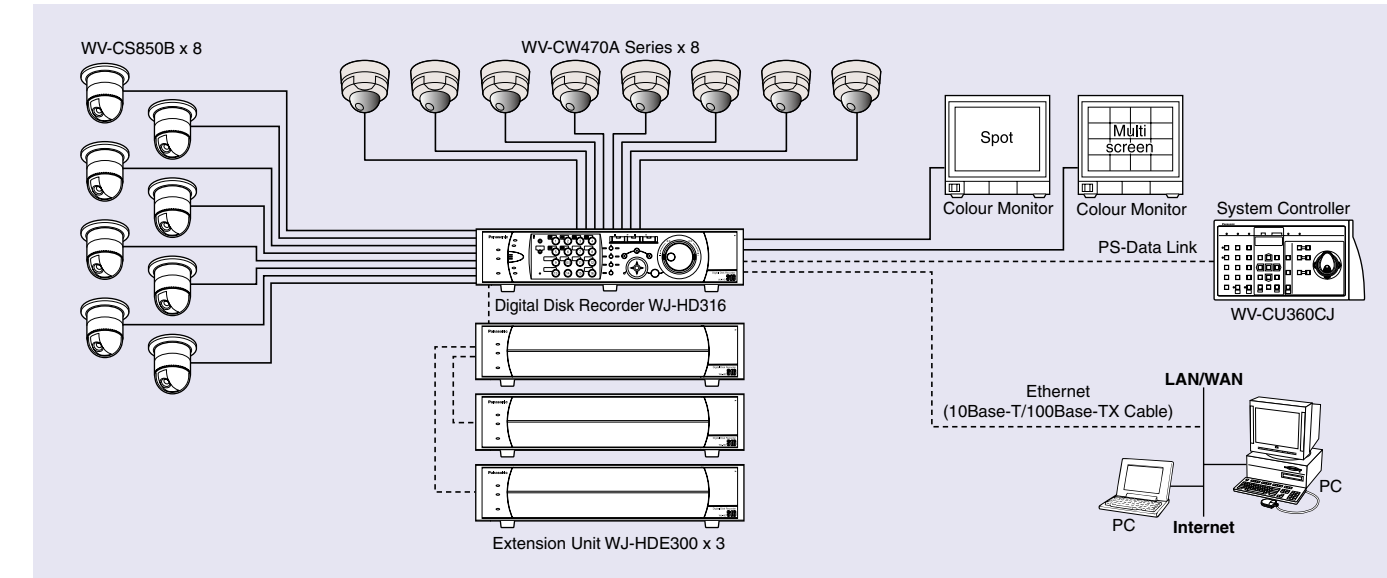
The Flush Mount Type WV-CW474AF can be installed in existing two gang junction box.



### Accepts both 24V AC and 12V DC power in a single unit

The Flush Mount Type WV-CW474AF accepts both 24V AC and 12V DC with a single cable terminal. This unique capability enables simple model selection and easy installation.

### SYSTEM EXAMPLE



# Super Dynamic II

### Two Types to Choose From

For direct attachment to walls, ceilings, eaves

Surface Mount Type WV-CW470AS



For insertion in existing junction box

Flush Mount Type WV-CW474AF



### 510-line horizontal resolution (High) in colour mode

Equipped with a powerful 752(H) x 582(V) 1/3-type CCD, these cameras deliver beautifully clear images with 510 lines (at High) and 480 lines horizontal resolution at colour imaging, and 570 lines at B/W mode.

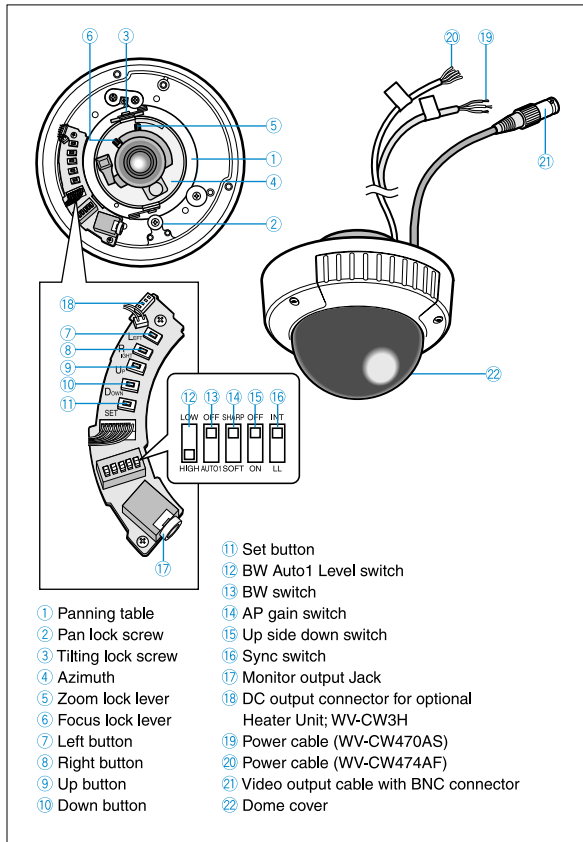
- At Hospitals
- At Day Care Centres
- At Courthouses
- At Correctional Facilities
- At Warehouses
- And many more

at ATMs/Banks/Jewelry Shops

at Campus

at Shopping mall/Building/Office

## MAJOR OPERATING CONTROLS



## OPTIONAL COMPONENTS & ACCESSORIES

Heater Unit  
**WV-CW3H**



Smoke Dome Cover  
**WV-CW2S**



Digital Disk Recorders  
**WJ-HD316 (16ch)**



PS•Data

**WJ-HD309 (9ch)**



PS•Data

### MATRIX SYSTEM 500

Matrix Switcher  
**WJ-SX550C**  
Card Cage  
**WJ-AD550**  
System Controller  
**WV-CU550CJ**



System Controller  
**WV-CU360CJ**



PS•Data

Colour Monitors

**WV-CM2080**  
55cm CRT

**WV-CM1780**  
45cm CRT

**WV-CM1480**  
40cm CRT

**WV-CM1420**  
37cm CRT

**WV-CM1020**  
25cm CRT



PS•Data



PS•Data



PS•Data



## SPECIFICATIONS

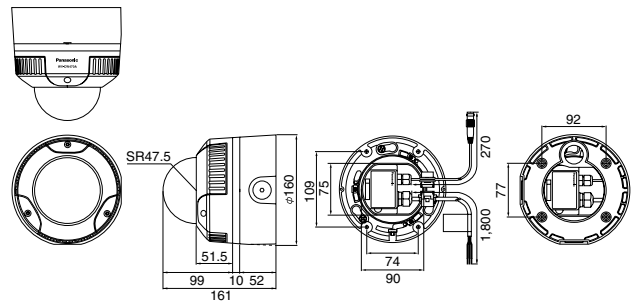
PAL CCR

Model No.	WV-CW470AS	WV-CW474AF
Type	Surface mount type	Flush mount type
Pick Up Device	752 (H) x 582 (V) pixels, interline transfer CCD	
Scanning Area	4.86 (H) x 3.62 (V) mm, (Equivalent to 1/3" tube)	
Scanning	625 lines / 50 fields / 25 frames	
Scanning System	2 : 1 interlace	
Synchronization	Internal / Line-Lock (220V ~ 240V AC / 24V AC) / VD2	
Video Output	1.0V [p-p] / 75 Ω / PAL composite signal / BNC connector	
Horizontal Resolution	510 lines (at High) and 480 lines at colour imaging mode, 570 lines at B/W mode	
Minimum Illumination (at F1.4 Wide)	0.8 lux at colour imaging mode 0.1 lux at B/W mode	
Signal to Noise Ratio	50dB (at AGC Off, Weight On, AP On)	
Dynamic Range	48dB (typical)	
Functions	Camera Title 16 character display (alphabet, numeric, symbols) Light Control ALC mode Super Dynamic II On / Off Electronic Shutter Off, 1/120, 1/250, 1/500, 1/1,000, 1/2,000, 1/4,000, 1/10,000 sec. AGC On (High / Mid / Low) / Off Electronic Sensitivity Up Off, Auto (x2, x4, x6, x10), Fix (x2, x4, x6, x10, x16, x32) White Balance ATW 1 / ATW 2 / AWC Motion Detector On / Off	
Lens	Type 2x variable focal lens Focal Length 3.8 ~ 8.0 mm Aperture Ratio F1.4 (Wide) to F1.76, close / F1.8 (Tele) to F1.76, close Min. Object Distance 1.2 m (3.9 ft) ~ ∞	
Ambient Operating Temperature	-10°C ~ +50°C [-30°C ~ +50°C with optional Heater Unit (WV-CW3H)]	
Ambient Operating Humidity	Less than 90%	
Power Source	220V ~ 240V AC, 50Hz	24V AC 50Hz, or 12V DC
Power Consumption	5.2W (camera only) 14.0W (with optional Heater Unit)	12V DC, 367mA (camera only) 24V AC 50Hz, 3.8W (camera only) 24V AC 50Hz, 12.1W (optional Heater Unit only)
Dimensions (D) x (H) mm	ø160 x 161	ø154 x 160.5
Weight (approx.)	2.15 kg	1.45 kg

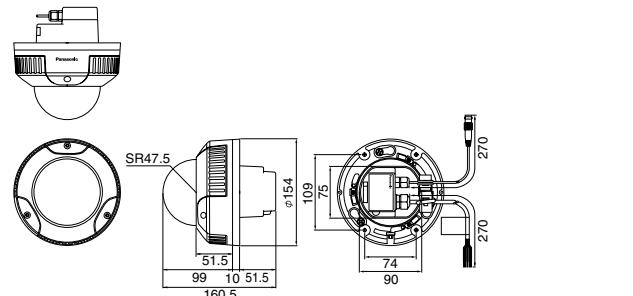
## APPEARANCE

Unit: mm

### WV-CW470AS (Surface mount type)



### WV-CW474AF (Flush mount type)



**Important** – Safety Precaution: carefully read the operating instructions and installation manual before using this product.

• All TV pictures are simulated. • Weights and dimensions are approximate. • Specifications are subject to change without notice. • These products may be subject to export control regulations.

## DISTRIBUTED BY:

**Panasonic System Solutions Company**  
**Matsushita Electric Industrial Co., Ltd.**  
4-3-1, Tsunashima-higashi, Kohoku-ku, Yokohama,  
223-8639, Japan  
Tel 81(0)45-540-5769  
Fax 81(0)45-540-5773  
URL <http://panasonic.co.jp/pss/cctv/en/index.html>

# Panasonic

Panasonic is the brandname of Matsushita Electric.  
Printed in Japan WJ-JKCW474AC (2N-692D)